



DID YOU KNOW? – March 2010

This month includes:

- **Countertop Choices – Part 2**
- **Basement Bar Project Pictures**
- **New Cabinet Products**

912 South Rangeline Road, Suite 100
Carmel, Indiana 46032

Phone: 317-848-1111
www.TheKitchenWright.com

In the March newsletter, we continue our series focusing on countertops. This month, we will begin looking at specific countertop options and their associated pros/cons. In addition, we have news regarding a new cabinet from Merillat that promises to help prevent damage from the nasty leaks and spills occurring under sinks. Finally, we are including a few pictures of a recent basement bar area designed for a local homeowner. Take a look.

Enjoy and please let us know if you have any questions.

Sincerely,
Rob Davis & Curt Wible

Countertop Choices – Part 2



In this month's newsletter, we examine Plastic Laminate, Ceramic Tile and Solid Surface countertop choices.

Plastic Laminate countertops are the most widely used choice in homes and are manufactured by gluing a piece of laminate onto a 1 ½" thick piece of particleboard in the shape of the countertop. Various edge profiles are available with fancier edges (bevels, curves) requiring custom fabrication. On the positive side, laminate tops are economical and available in a host of colors and patterns. Backsplashes can be integrated into the countertop and undermount sinks (both solid surface and stainless steel) are options. On the negative side, plastic laminate is not scratch or heat resistant, resulting in a shorter life. Once a laminate top is damaged, it is not easily repaired. Laminate manufacturers offer premium and high-definition colors with improved wear and scratch resistance.

Ceramic Tile is another popular and economical countertop option. Similar to laminate, ceramic tile provides a number of color and pattern choices. Mixing and matching tiles can make the top as simple or complex as desired. In addition, ceramic tile is heat, scratch, and stain resistant. If any tiles become damaged, they are easily replaced. Key complaints with ceramic tile countertops are maintenance requirements and grout staining. The grout needs to be sealed regularly. If sealing is only done infrequently, the grout can become stained. Tiles can also crack or chip. As mentioned above, this can be repaired as long as extra tiles are available.

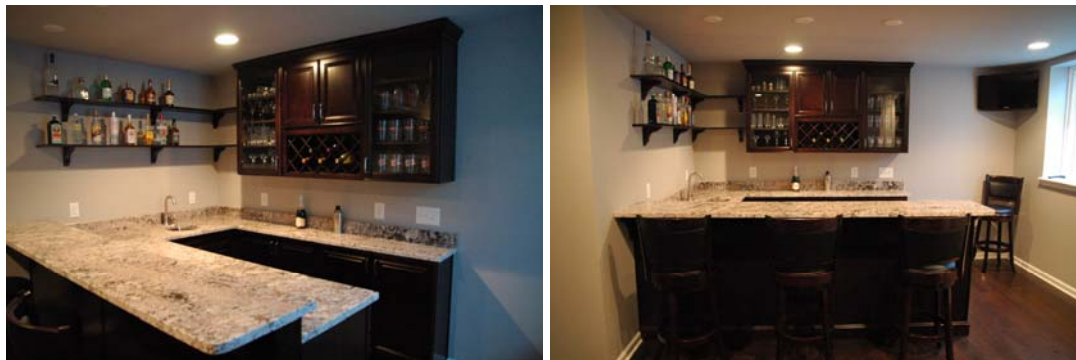
Solid Surface countertops are made from acrylic material with no visible seams. The countertop and sink can be seamlessly integrated providing a smooth, flowing look. This man-made product comes in a variety of colors and patterns, including options which look like stone and glass. Solid surface countertops are non-porous and stain resistant. While it is not scratch

resistant (sharp knives can easily scratch it), the color goes through the entire counter allowing scratches or blemishes to be easily buffed out.

Next month, we will finish the series by looking at Quartz, Granite, Stainless Steel, and Wood countertops.

Basement Bar Project Pictures

Recently, we designed a bar area for a Carmel homeowner. Below are a couple pictures of the finished project. Please contact us for a free design consultation if you are interested in a similar upgrade for your home.



New Cabinet Products

Later this year, Merillat cabinetry is introducing a new kitchen and bathroom sink base cabinet to handle small leaks and spills occurring under sinks. These leaks and spills often go undetected for a long period of time, permanently staining or damaging the cabinet. The new sink base cabinet, Merillat CoreGuard™, will be available this fall and will keep cabinets dry and clean for many years. Merillat specifically designed the new CoreGuard cabinet to address the issues of spills and leaks. With the exception of the cabinet's face, frame and door assembly, the wood-based materials normally used in construction have been replaced with engineered polymer material.

This material does not absorb water or other liquids, making it easier to clean and maintain. In addition, the floor has a slight forward tilt so spills and leaks migrate to the front of the cabinet, making it easier and quicker to detect spills or leaks. The floor's ribbed design helps keep bottles and boxes slightly elevated to minimize damage without blocking spills and leaks from moving to the front of the cabinet.



We hope you find our newsletter helpful. If you have any questions or would like to talk with one of our professional designers about a remodeling project, please give us a call (317-848-1111), stop by our showroom in Carmel Indiana, or send us an email at info@thekitchenwright.com.